

Installing Recorder 6 on a Windows 8/8.1 - 64 bit PC

1. Introduction

This guide gives detailed instruction for the installation of Recorder 6 (v6.23.2) on a standalone Windows 8, 64 bit PC. The instructions are based on an 'out of the box' version of the first version of Windows 8, with no upgrades applied. They also work with Windows 8.1. The machine used was a 64 bit Toshiba Satellite with 2.00 GB of memory.

2. SQL server

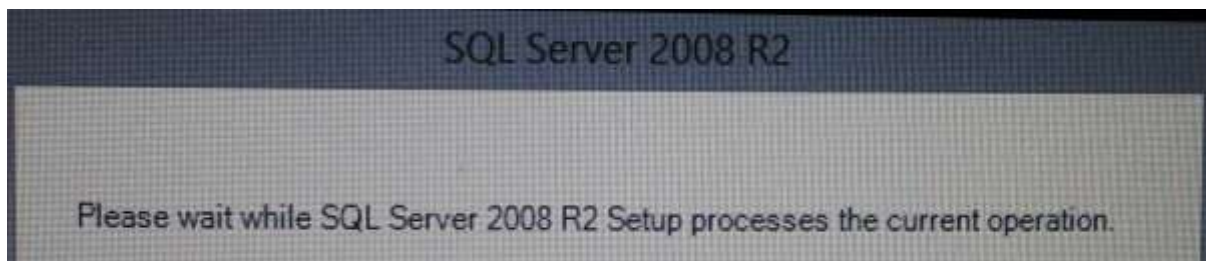
These instructions use SQL Server 2008 R2 Service Pack 2, advanced version with tools. This can be downloaded from <http://www.microsoft.com/en-us/download/details.aspx?id=30438>

The file used in this guide is SQLEXPADV_x64_ENU.exe 1,008.6 MB. Click on download and select this file. Click on next to download.

You may also use SQL Server 2012 or 2014. It is suggested that you use a version with tools. The instructions will be similar.

3. Installation of SQL Server 2008

3.1 Find the downloaded SQL Server file, SQLEXPADV_x64_ENU.exe and double click on it to start the installation. The following box will display, but be patient as it doesn't always appear immediately (allow 30 seconds). This box will also appear at various other times while processing is taking place, but does not always appear immediately a button is clicked. Where appropriate Click 'Next' to move onto the next window.



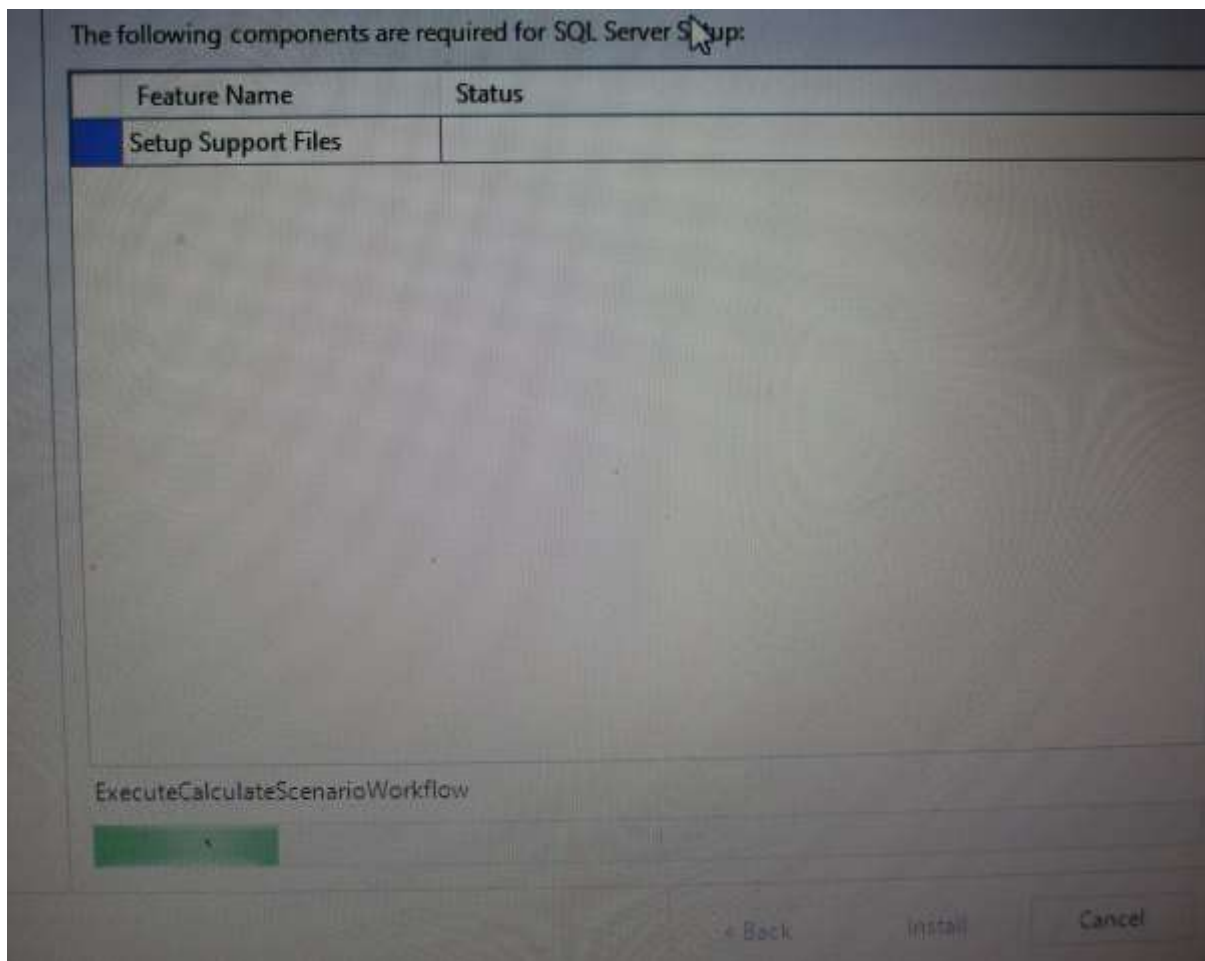
3.2 If the User Account Control box displays select Yes to allow changes.

A small window showing that files are being extracted will display.

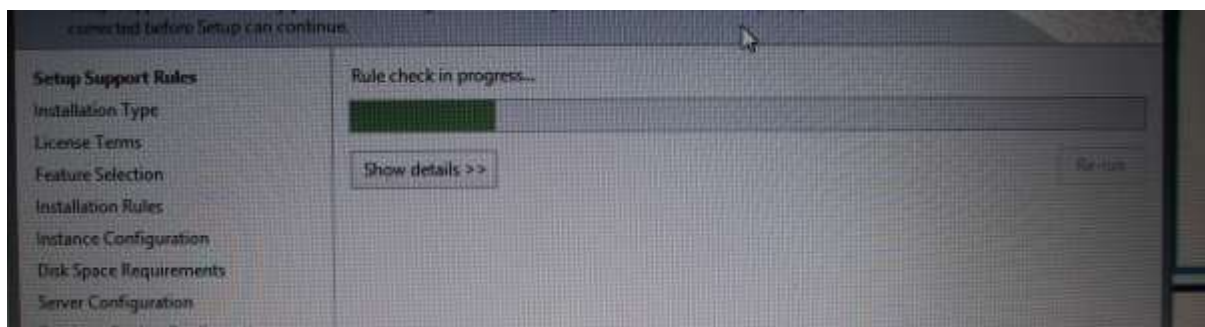
3.3 Select New Installation



3.4 The following window will display. It will take a while to process .

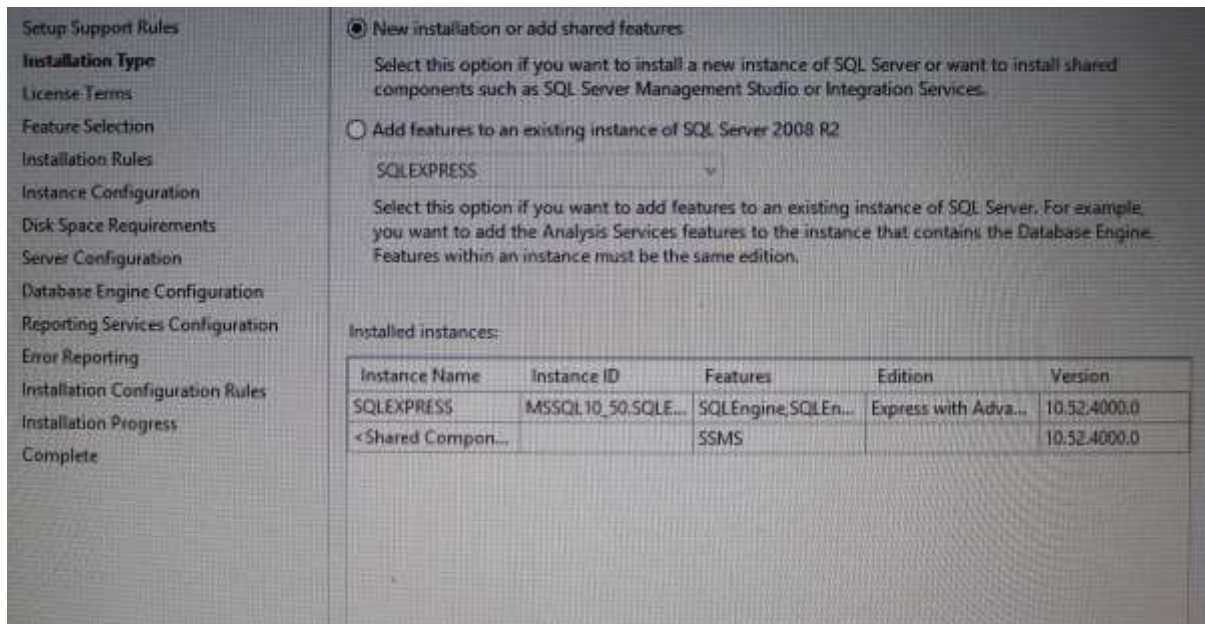


3.5 This windows will display briefly

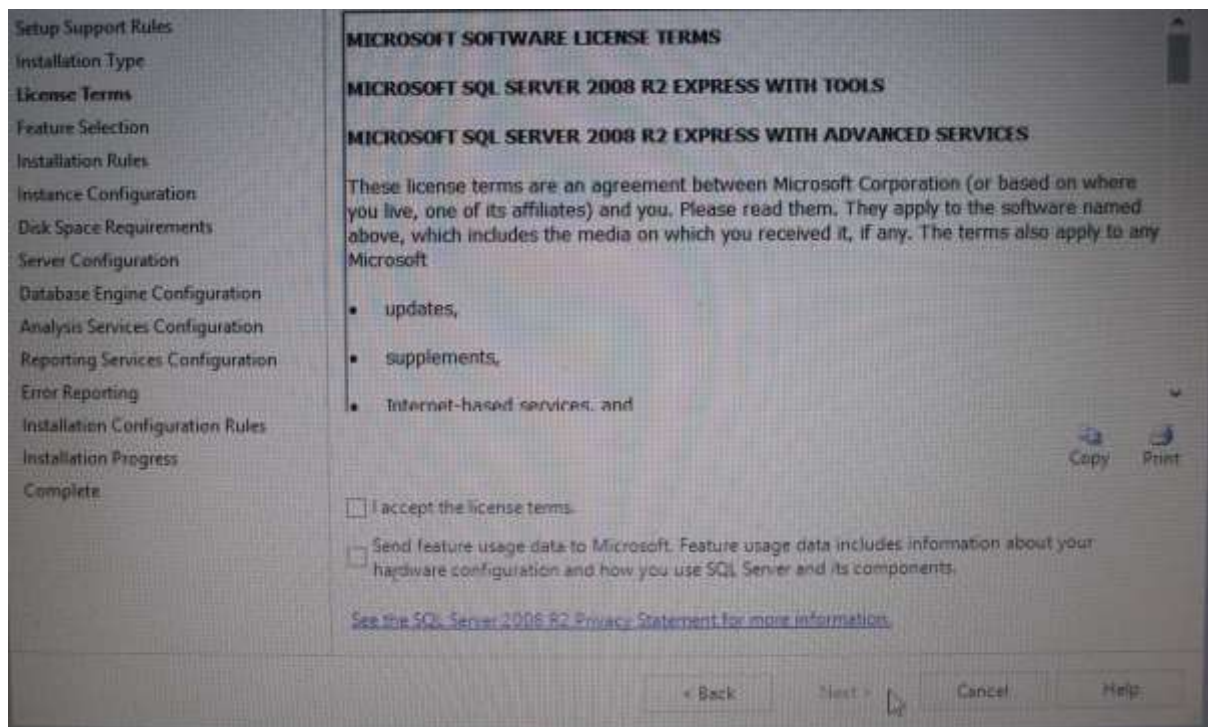


3.6 There were no problems with my install. However, if there are any failures or warnings in the checks then these will be listed. Warnings may be ignored. If there are any failures then these will need to be resolved. Help may be found on the Microsoft web site or post a question on the Recorder 6 forum. The window listing issues will only display if there are any. Click install if you only have warnings.

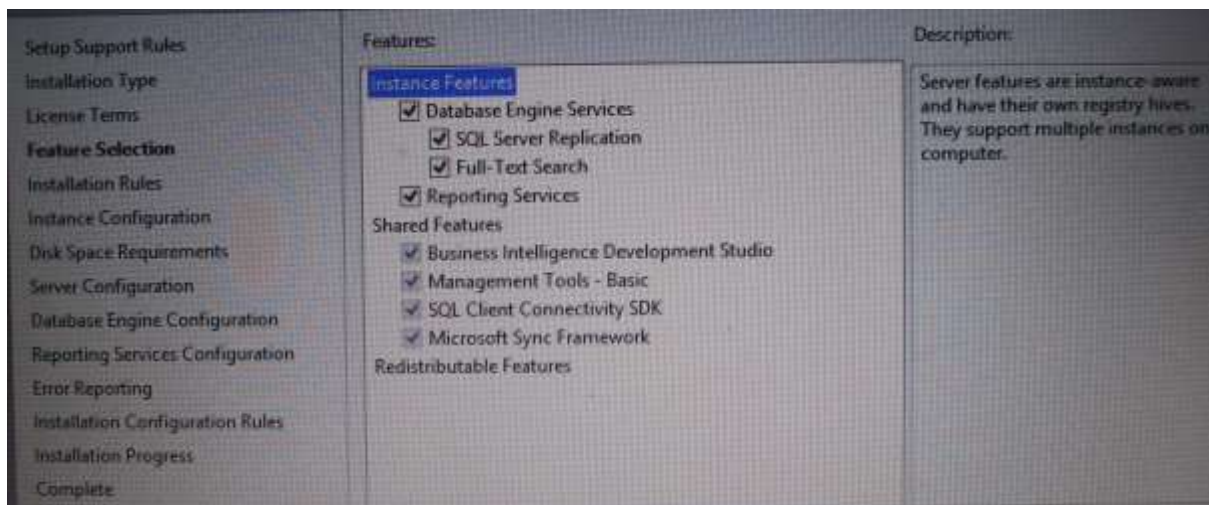
3.7 Leave the defaults on this window



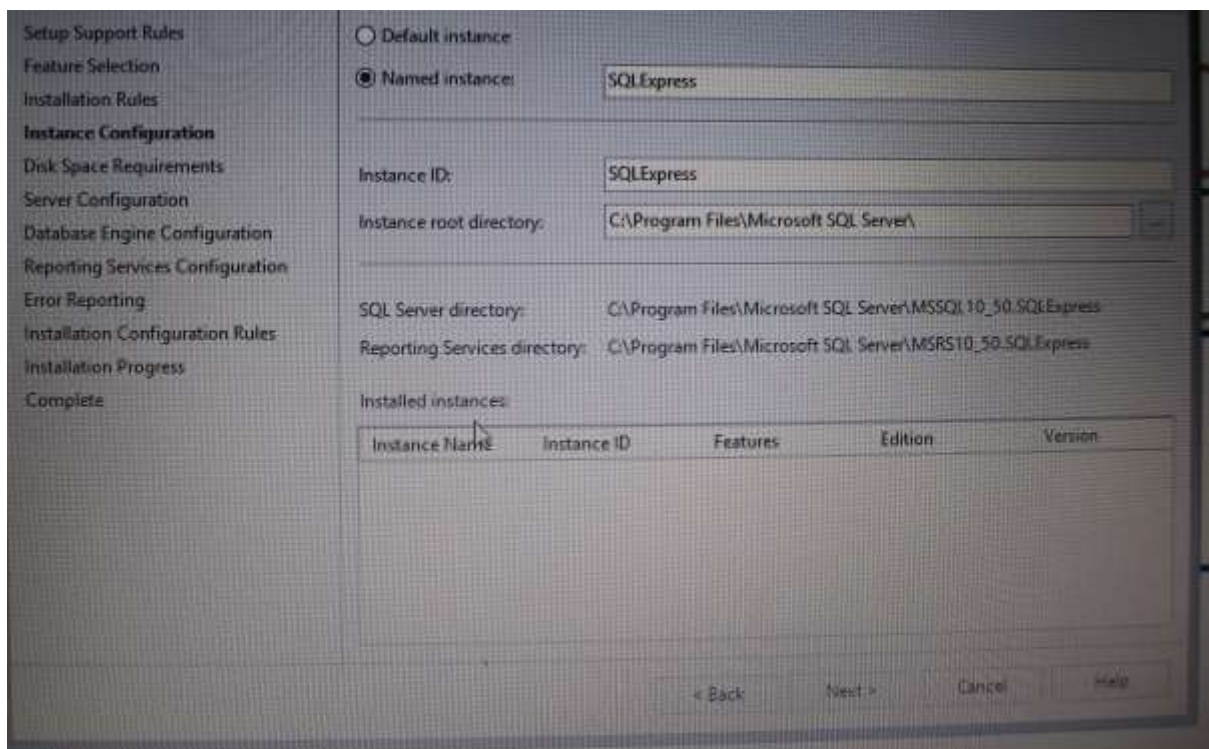
3.8 Accept the terms and conditions



3.9 Leave all the defaults ticked



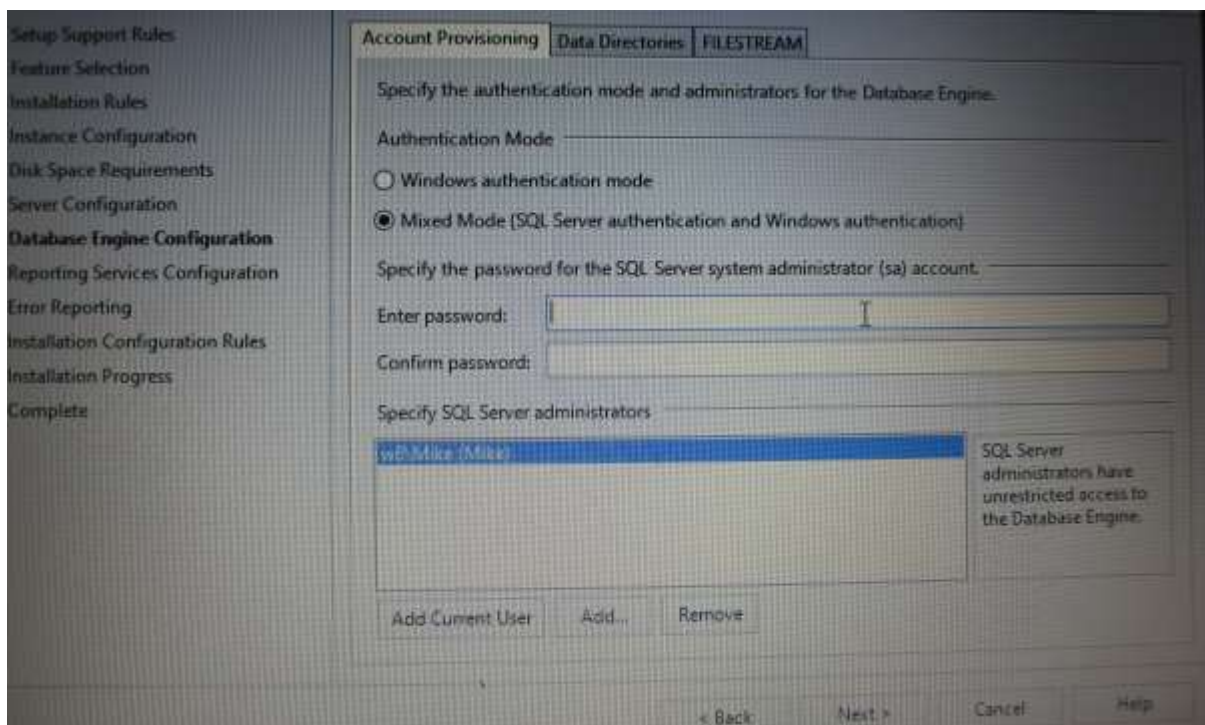
3.10 Use Named Instance. You can change the instance name if you prefer, but make sure you note down what you use.



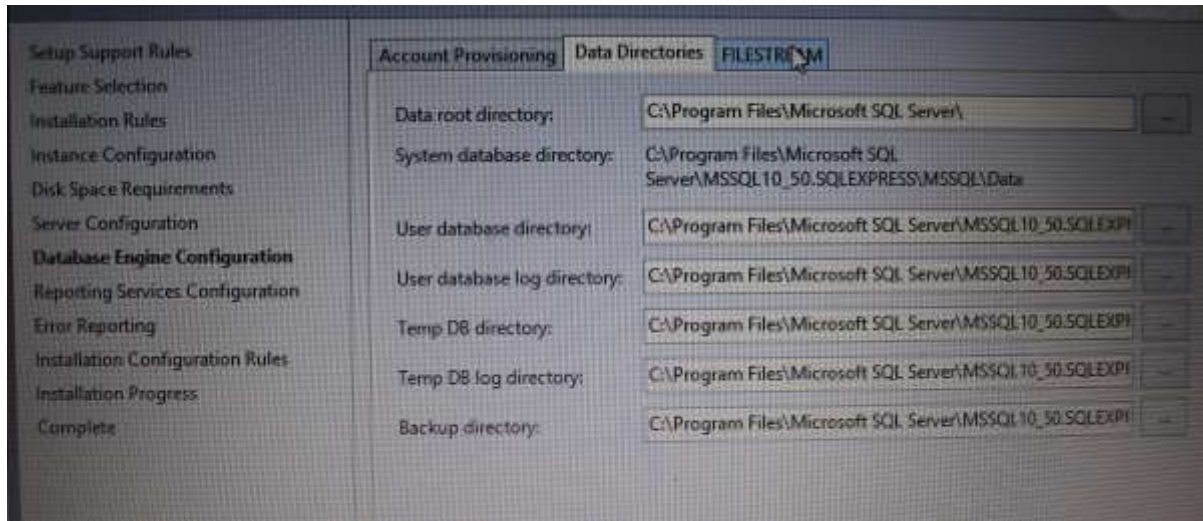
3.11 Leave the defaults.



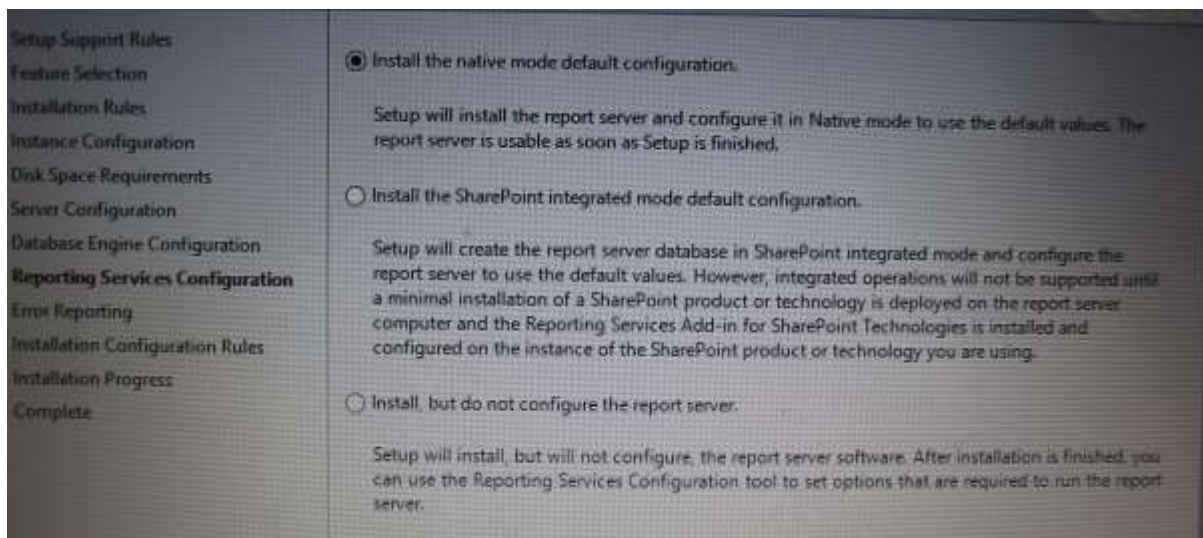
3.12 Select mixed mode. This isn't essential, but may be useful later. Enter a password. NOTE THIS DOWN. (Suggested password Recorder6). Make sure that there is a SQL Server Administrator shown. If not click 'Add Current User'.



3.13 Leave the defaults



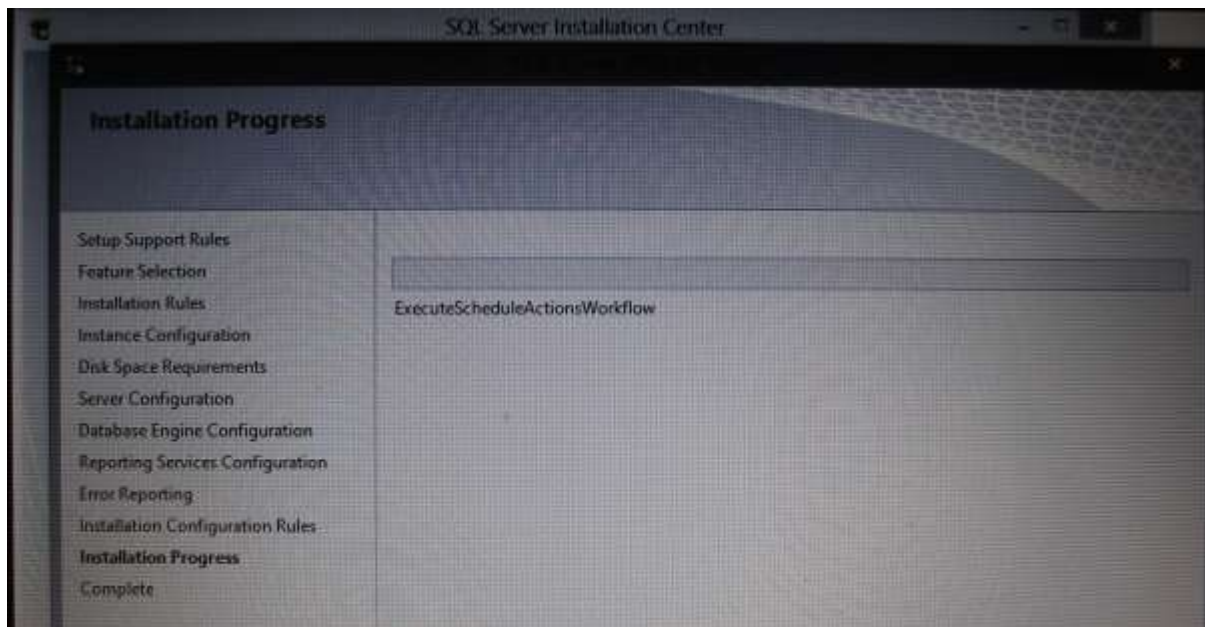
3.14 Leave the defaults



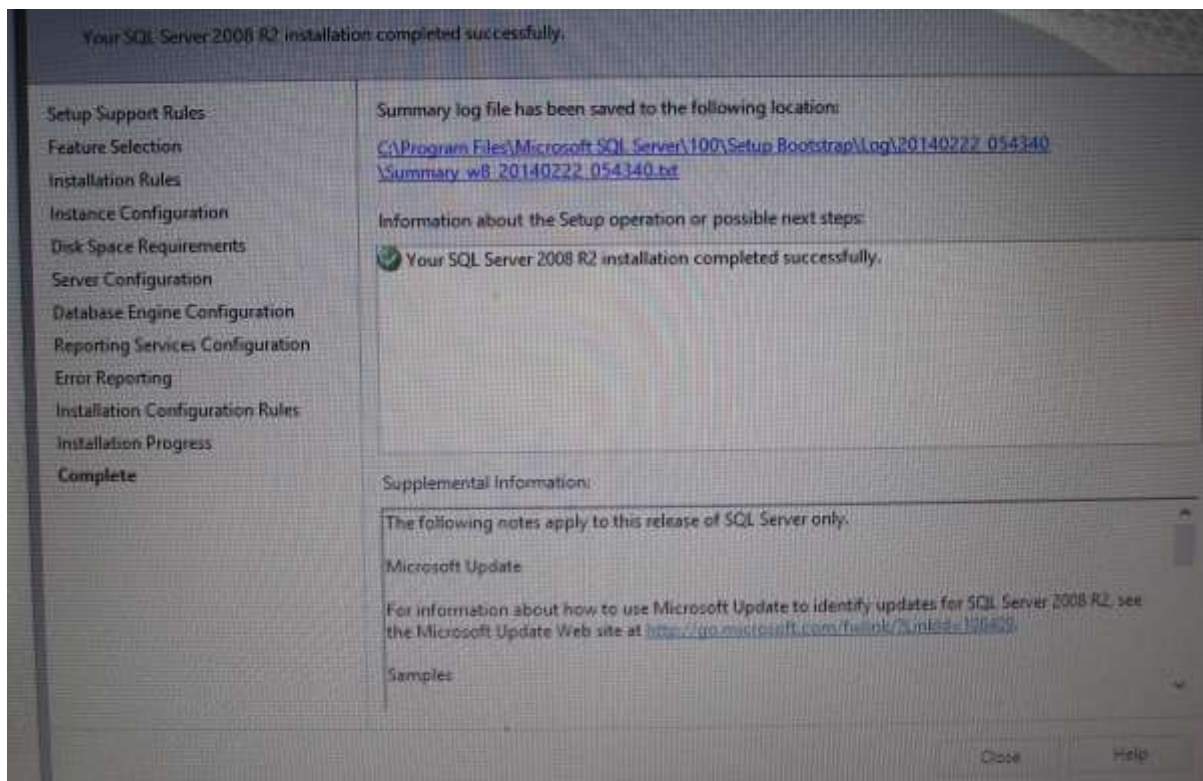
3.15 Leave the defaults



3.16 Wait for Installation to Complete



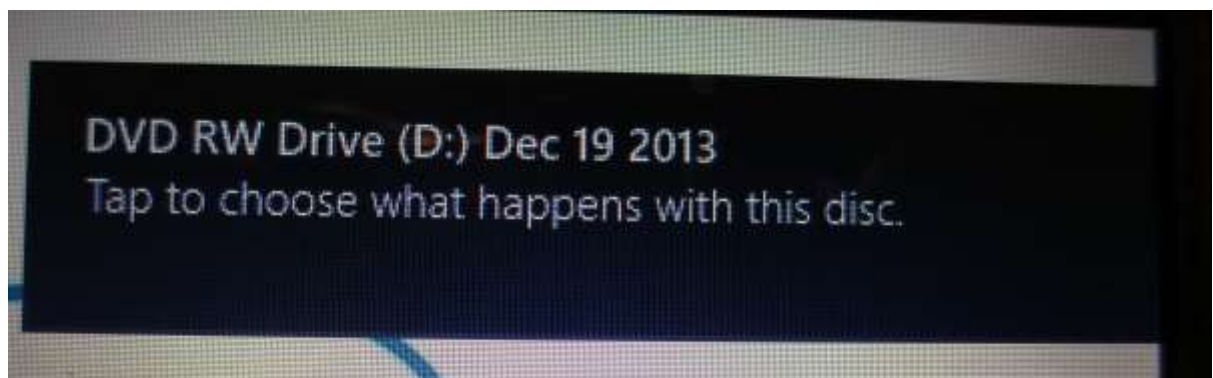
3.17 Installation Complete



4. Installation of Recorder 6

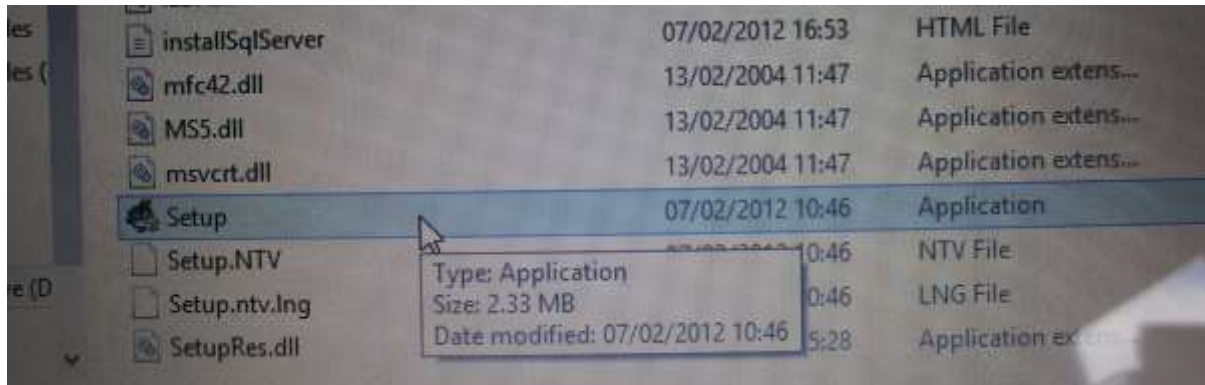
This is a normal install.

4.1 Load the DVD The following box should appear. Click on this.

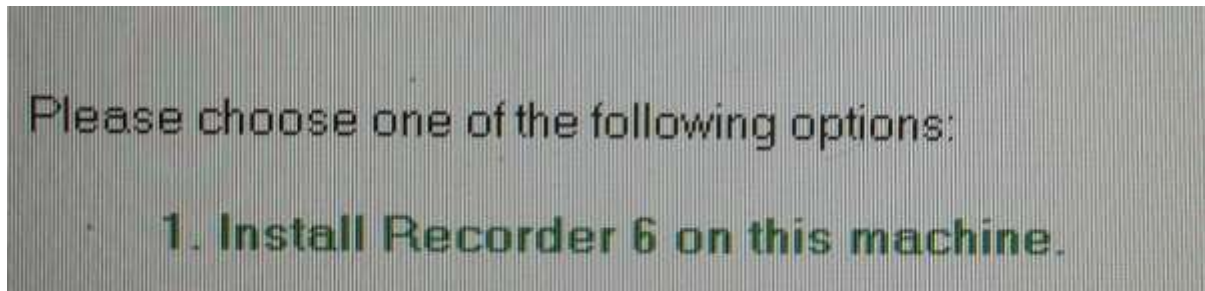


If installing from a downloaded zipped version, unzip it into a suitable folder and run from there.

4.1 Double click on Setup to start the R6 Install



4.2



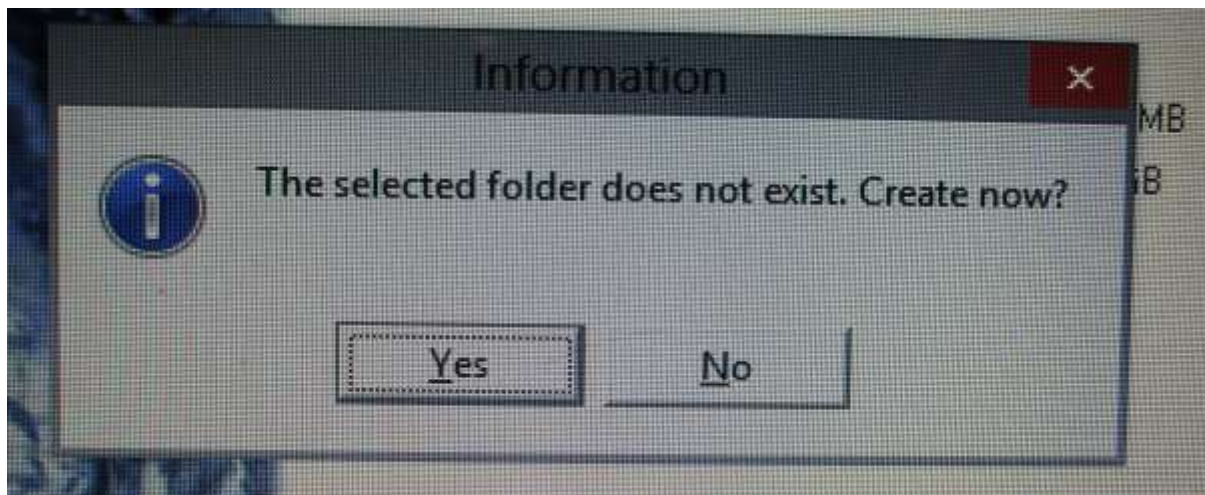
4.3 Click next



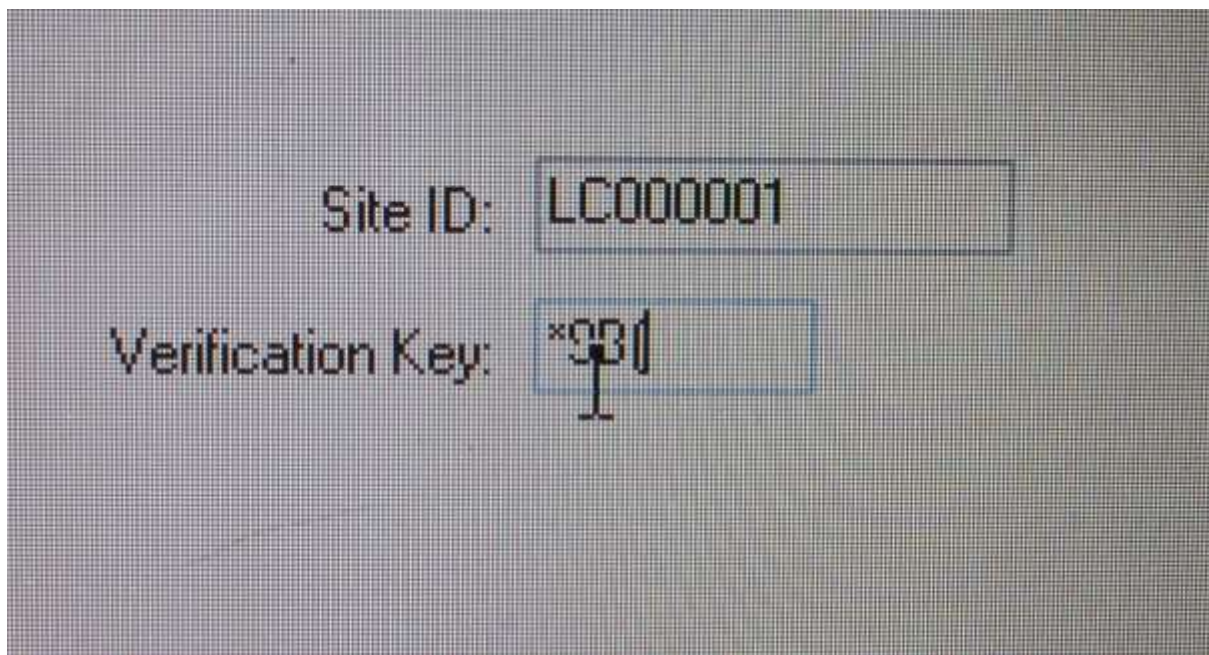
4.4 You may accept the default or If required change the folder at this point. Note that this will only determine where the program files go. Users files will always go on the C: drive in the Windows default folder for User files. Normally C:\Users\Public\Public Documents\Recorder 6.



4.11 Select Yes to create the folder



4.12 Enter the site number and verification code

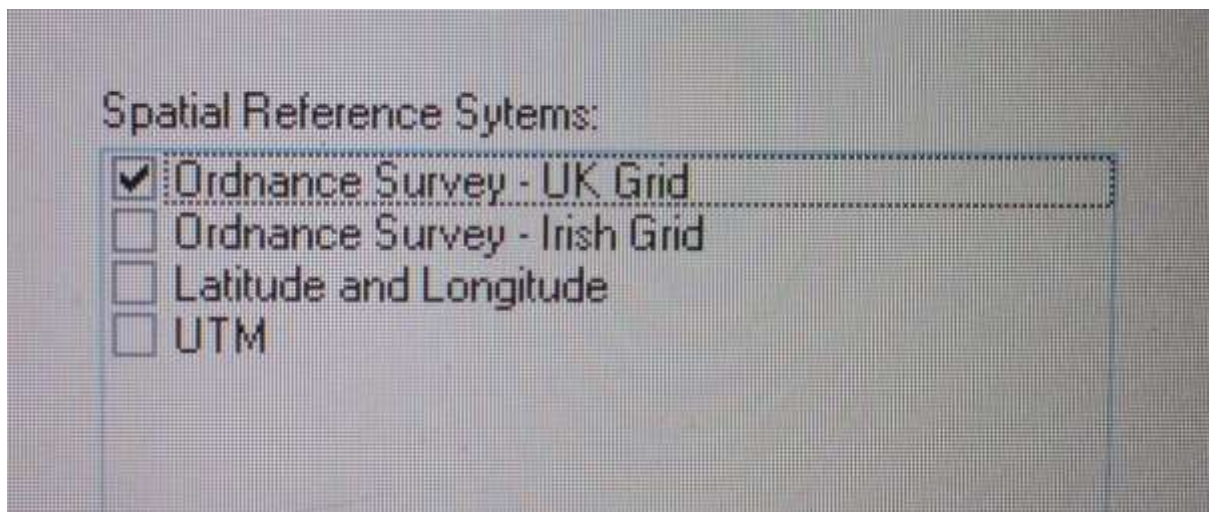


A screenshot of a form with two input fields. The first field is labeled "Site ID:" and contains the text "LC0000001". The second field is labeled "Verification Key:" and contains the text "*930". A cursor is visible at the end of the verification key.

Site ID: LC0000001

Verification Key: *930

4.13 Select the spatial ref system

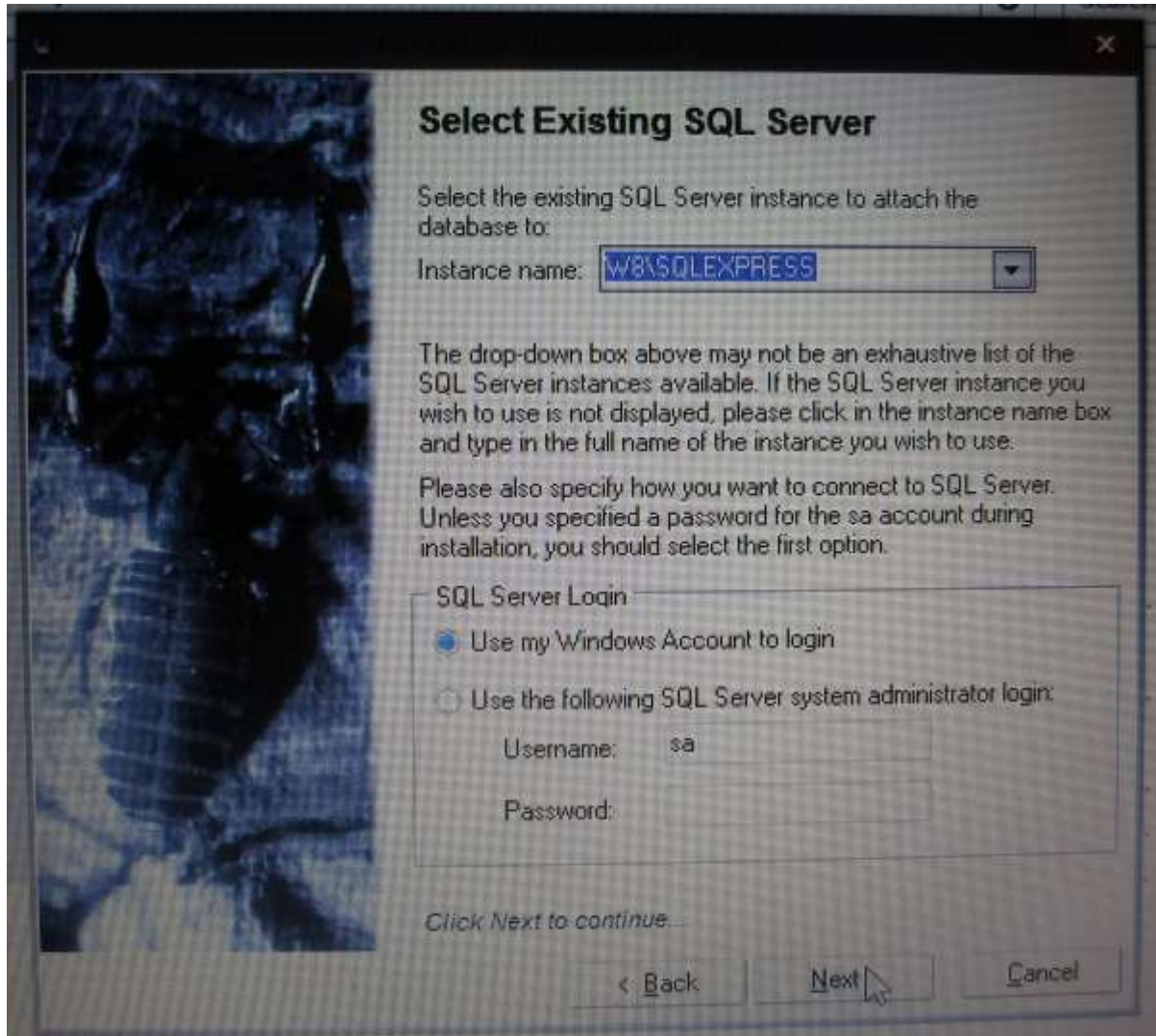


A screenshot of a list of Spatial Reference Systems. The list is titled "Spatial Reference Systems:" and contains four items, each with a checkbox. The first item, "Ordnance Survey - UK Grid", is selected with a checkmark. The other three items, "Ordnance Survey - Irish Grid", "Latitude and Longitude", and "UTM", are not selected.

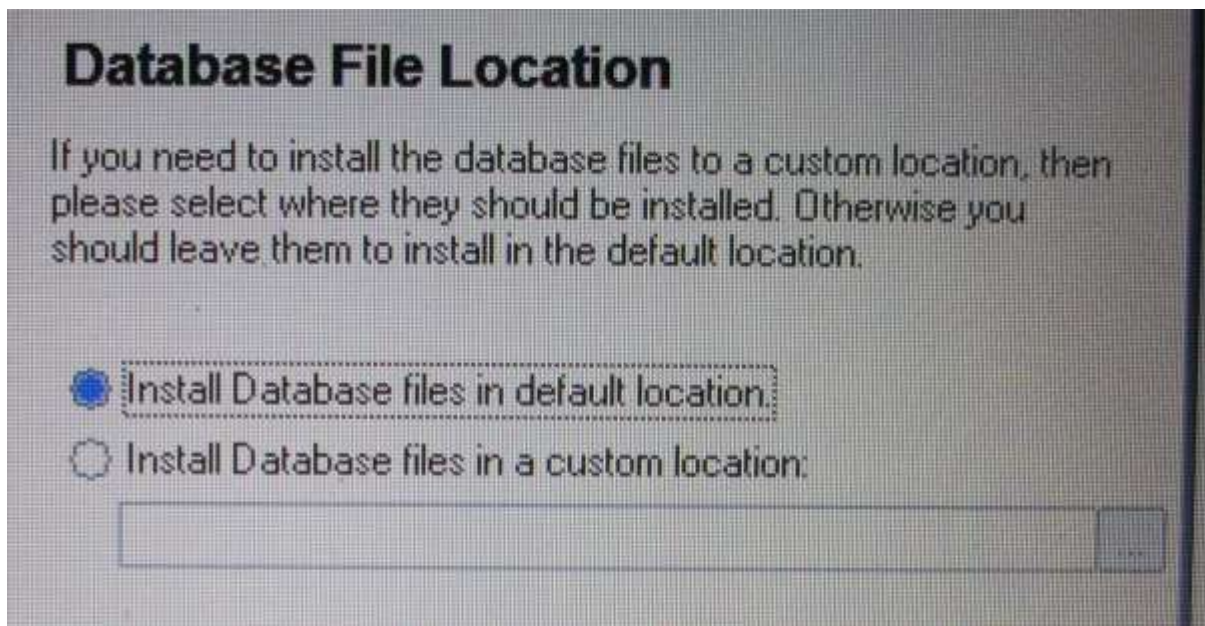
Spatial Reference Systems:

- Ordnance Survey - UK Grid
- Ordnance Survey - Irish Grid
- Latitude and Longitude
- UTM

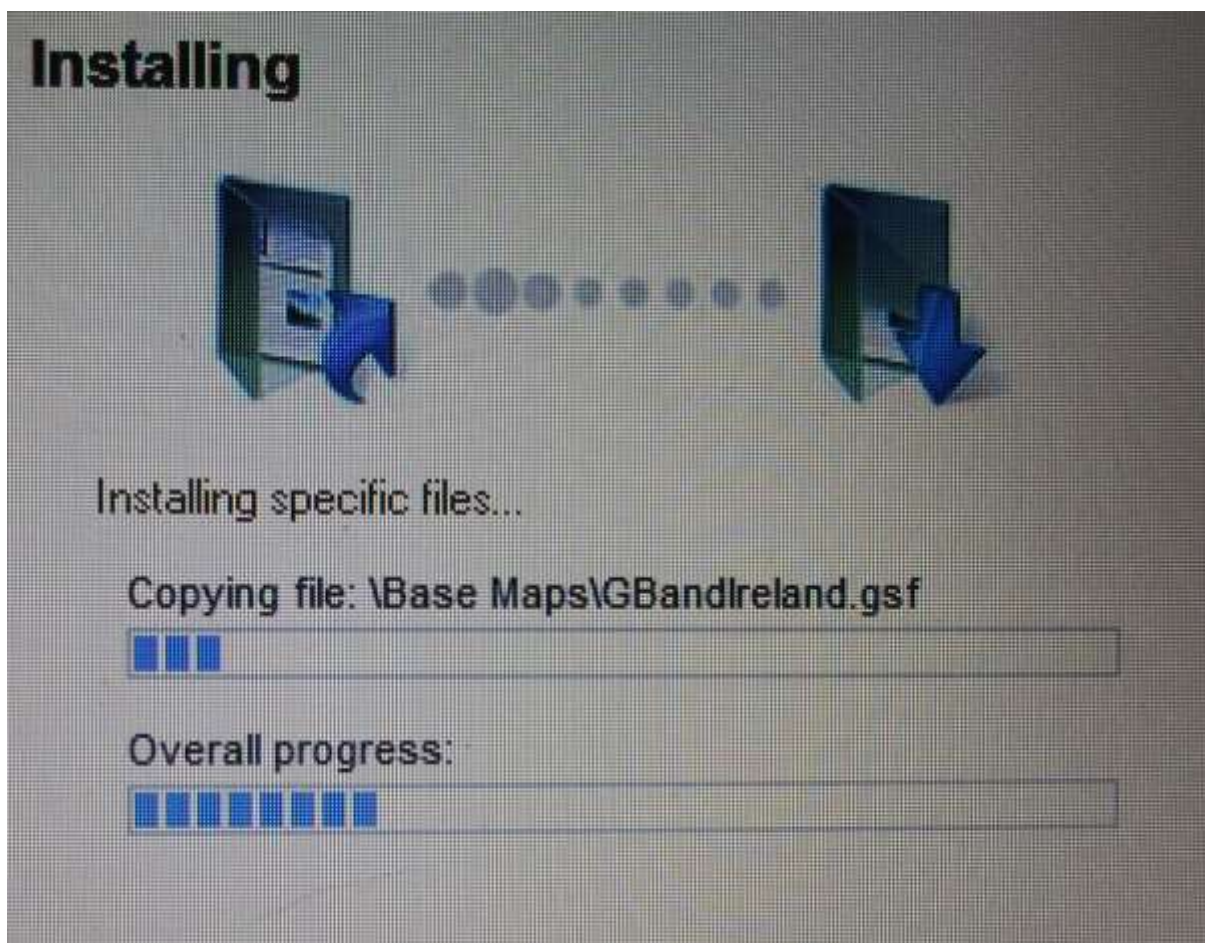
4.14 If you have only one instance of SQL Server installed this will show in the box. If you have multiple instances then use the drop down to select the instance as created when you installed SQL Server



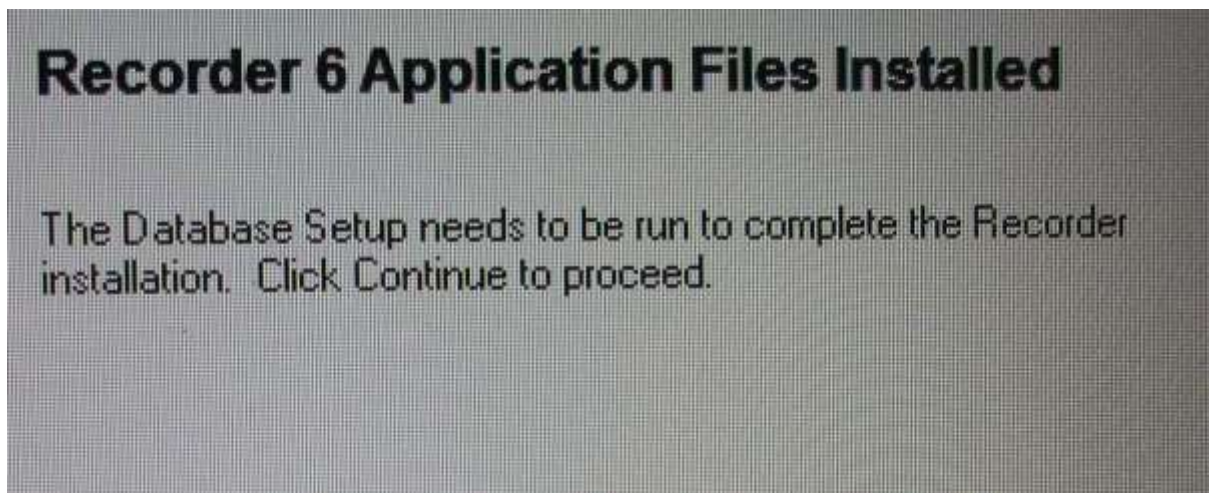
4.15 Leave the default at this Window



4.16 Allow installation of first phase to complete

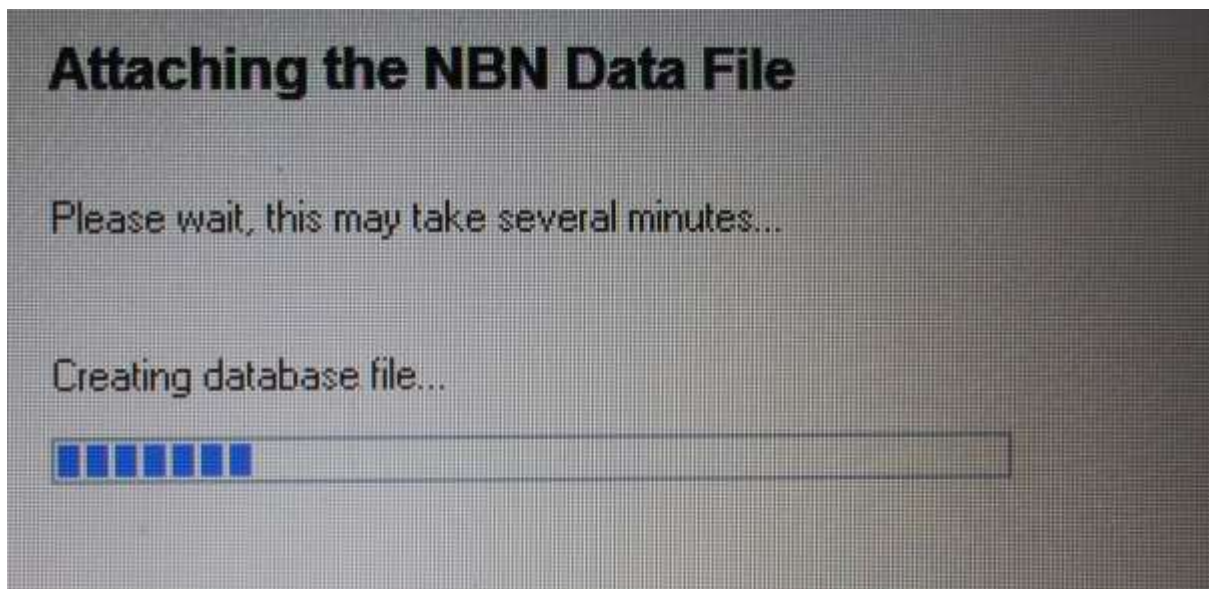


4.17 Click continue to proceed



4.18 If you are installing for a second time or after deleting R6 you may get a message to the effect that the database already exists. Always replace the database.

4.19 Allow this process to complete. The Access database will then be created and the installation will then be complete.



4.20 When this completes, select the option to open R6 and complete the details requested.

5 Additional Notes

5.1 Addins and Windows 8

Most addins seem to install, however, you may need to copy them to the Recorder 6 addin folder. If you follow the install instructions detailed above, the Addin folder will be C:\Recorder\Addins. Copy

all the files associated with the addin into this folder. Install the addin in the normal way, loading it from the Addin folder. This will generate a message saying the addin already exists, but you can continue following this message. If you are replacing an addin with a later version, then delete the old version via Recorder 6. Close R6 and copy the new files into the addin folder to overwrite those already there. Install in the normal way.

If nothing appears to be happening then look for windows which are minimised.

5.2 Installation Files Paths

These are the file paths if the Recorder 6 is used as the install folder.

Addin	C:\Recorder6\Addins
Base map	C:\Recorder6\Base maps
Batch Update	C:\Users\Public Documents\Recorder 6\User Files\Batch Updates
Database (Ms Access)	C:\Recorder6\Database\nbndata.mdb
DTD	C:\Recorder6\Dtd
Error	C:\Users\Public Documents\Recorder 6 \Errors
Help	C:\Recorder6\Help\Rec20HLP.chm
Import Template	C:\Users\Public Documents\Recorder 6\User Files\Import Templates
Local Image Files	C:\Users\Public Documents\Recorder 6\User Files\User Dictionary Images
Map File Path	C:\Users\Public Documents\Recorder 6\Map Files
Object Sheet	C:\Users\Public Documents\Recorder 6\Object Sheet
Polygon Filter	C:\Users\Public Documents\Recorder 6\User Files\Polygon Filter
Recording Card	C:\Users\Public Documents\Recorder 6\User Files\Recording Cards
Reports	C:\Users\Public Documents\Recorder 6\User Files\Reports
Report Templates	C:\Users\Public Documents\Recorder 6\User Files\Templates
Rucksacks	C:\Users\Public Documents\Recorder 6\User Files\Rucksacks

Other folders may be generated by the application. Normally in C:\Users\Public Documents\Recorder 6\User Files\

For any folders you need to access on a regular basis, you can create a shortcut on the desktop.

Windows8 – R6 Installation)

Mike Weideli

26 July 2015

