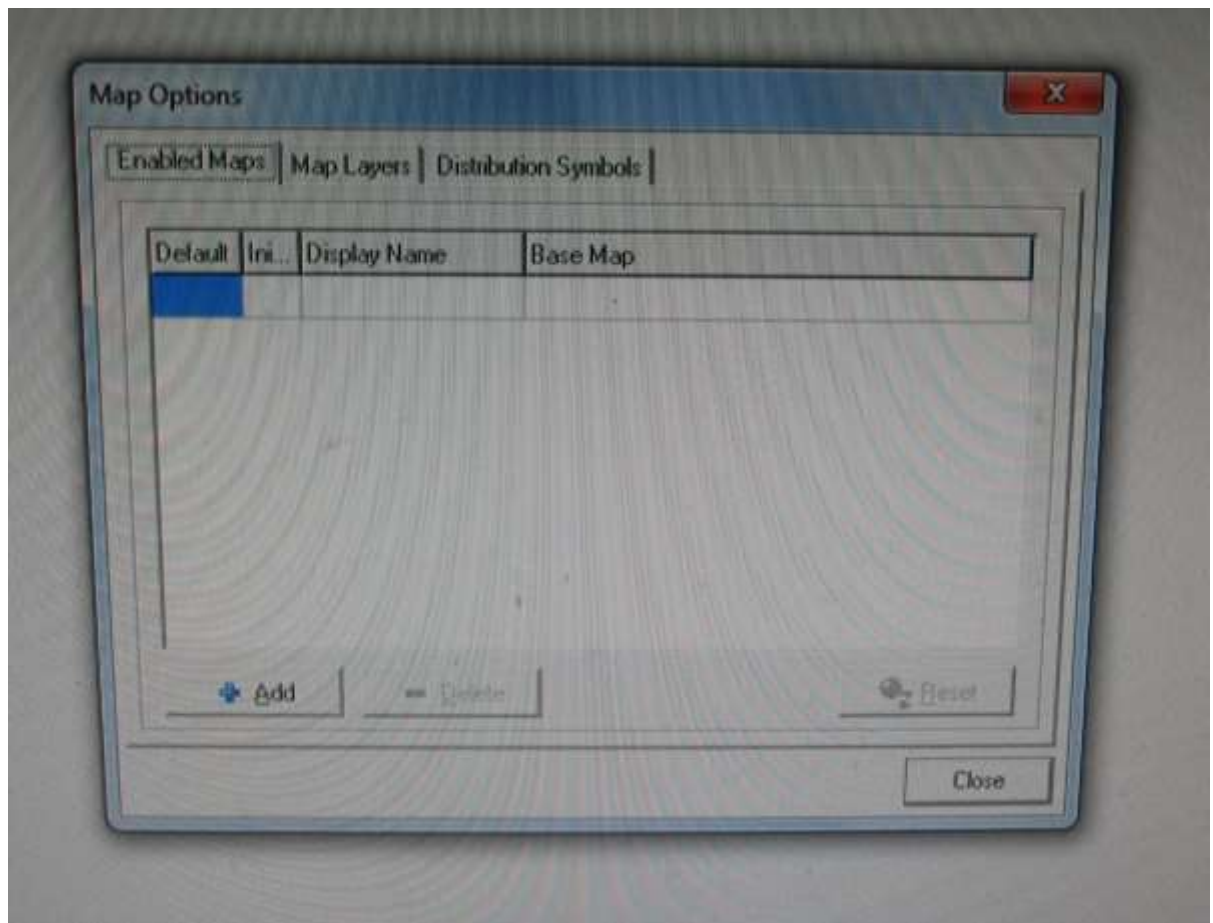
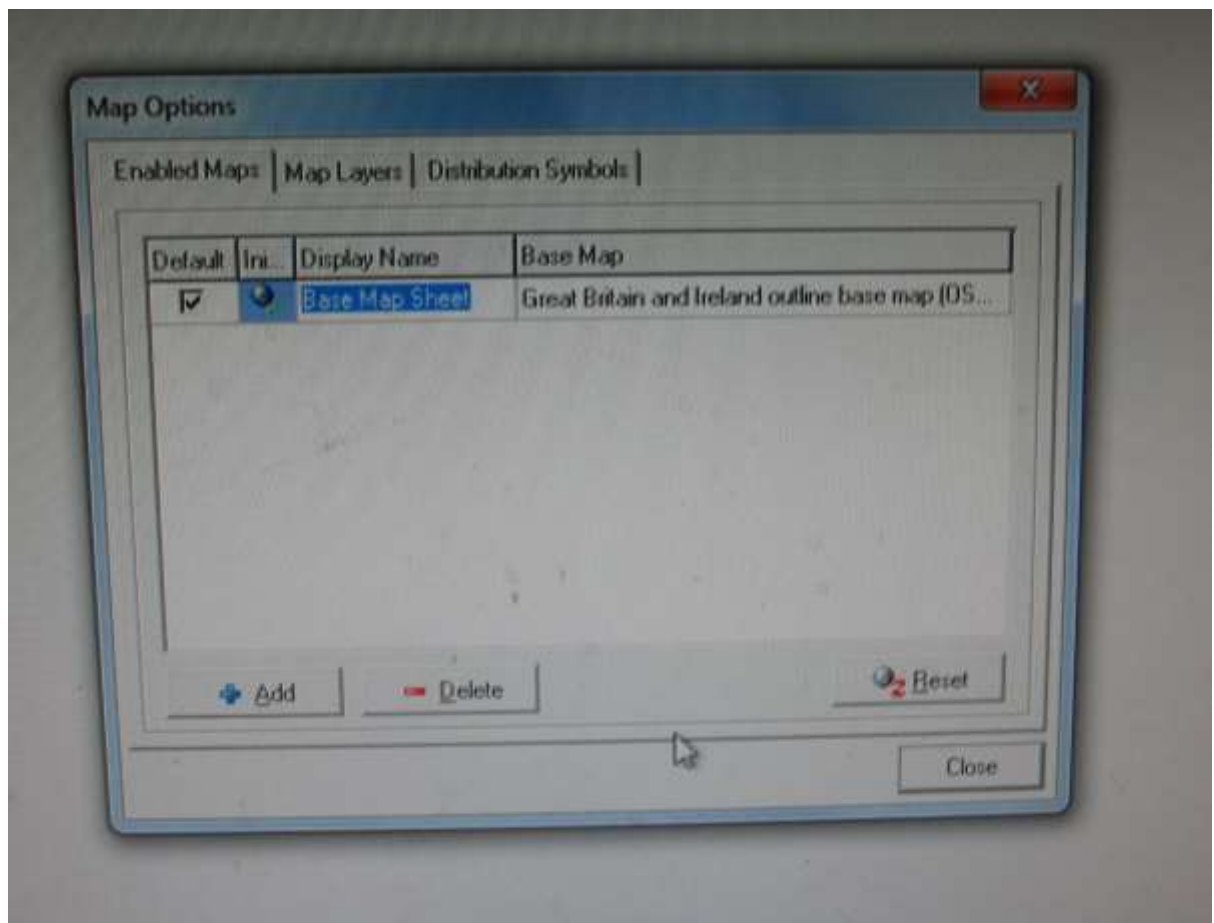


Set Up and Installation of Map Files and gsf Files

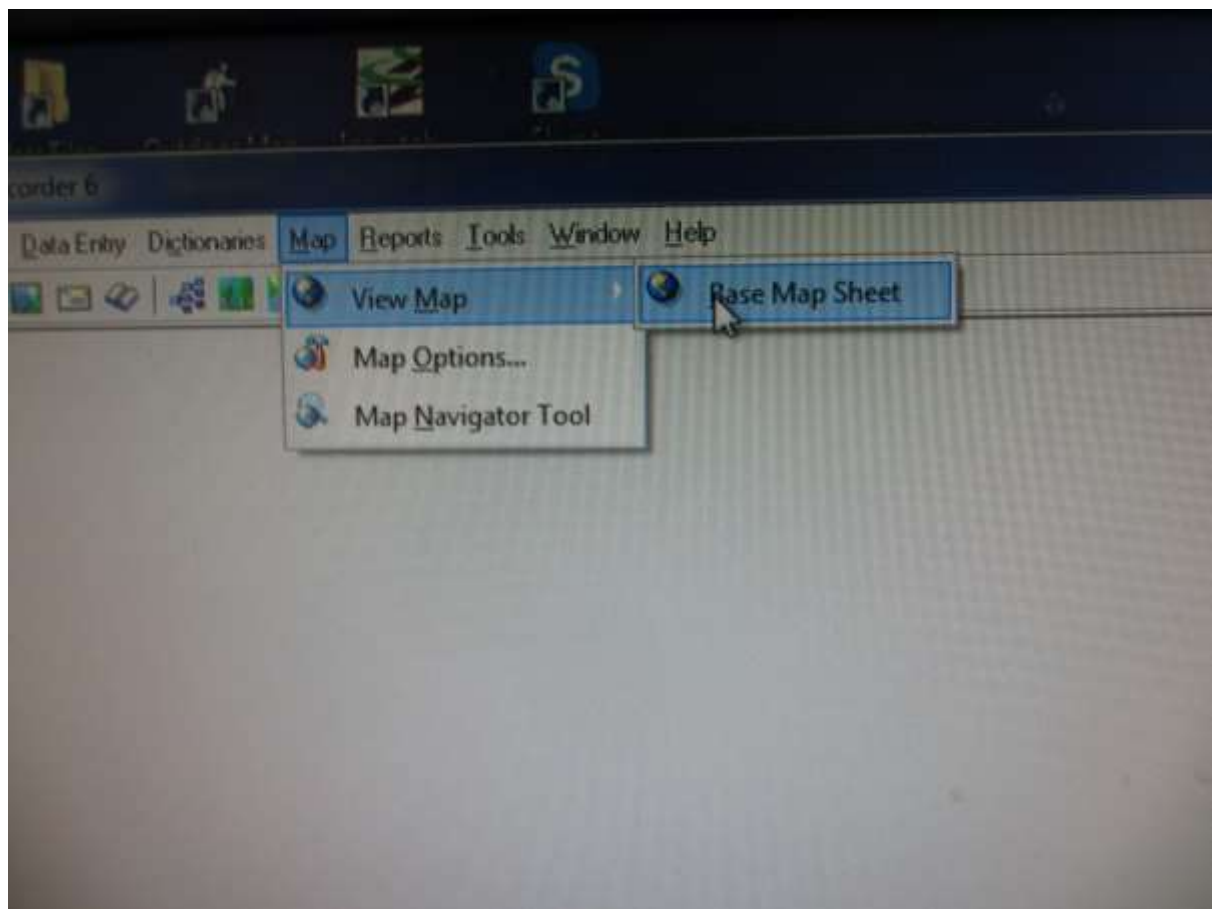
1. Open Recorder and Click on Map and Map Options. This will bring up the following Window. Click on Add



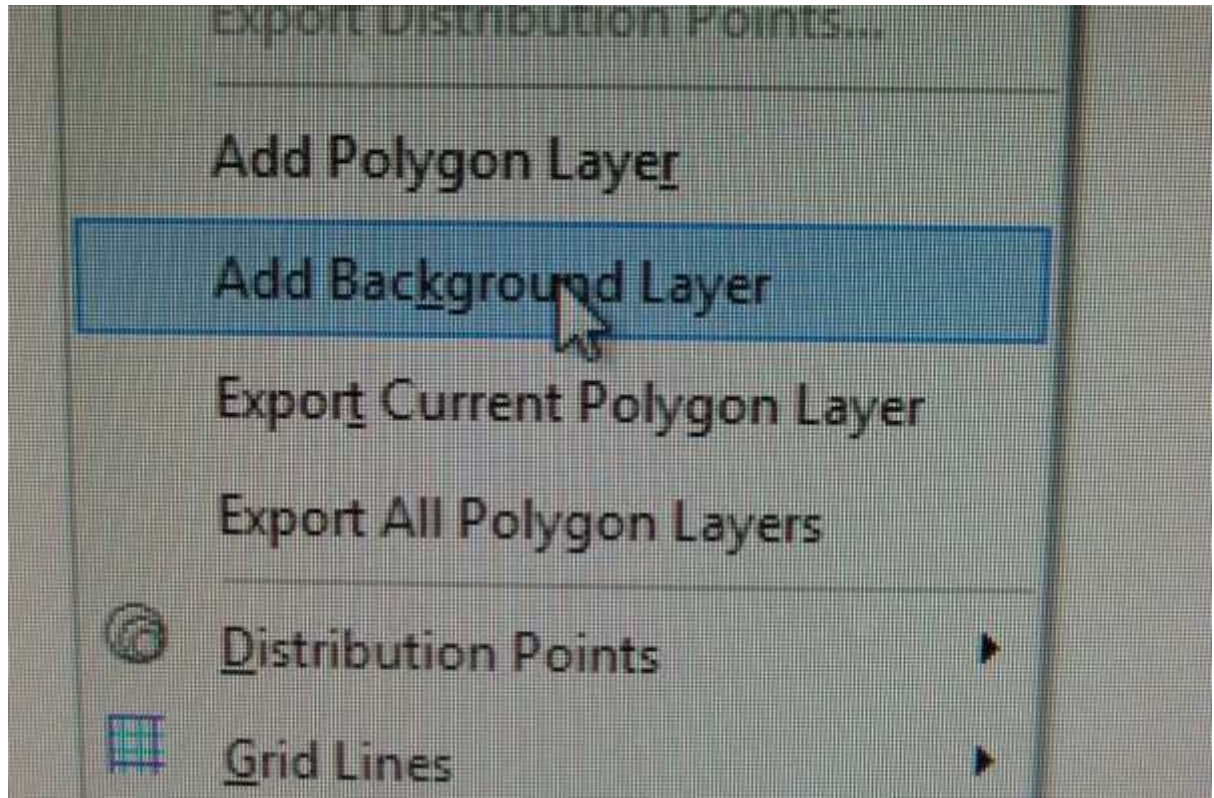
2. Base Map Sheet will be added . Click on close.



3. Open Map Option and Select View Map – Base Map Sheet



4. Find Add Background Layer and click on this

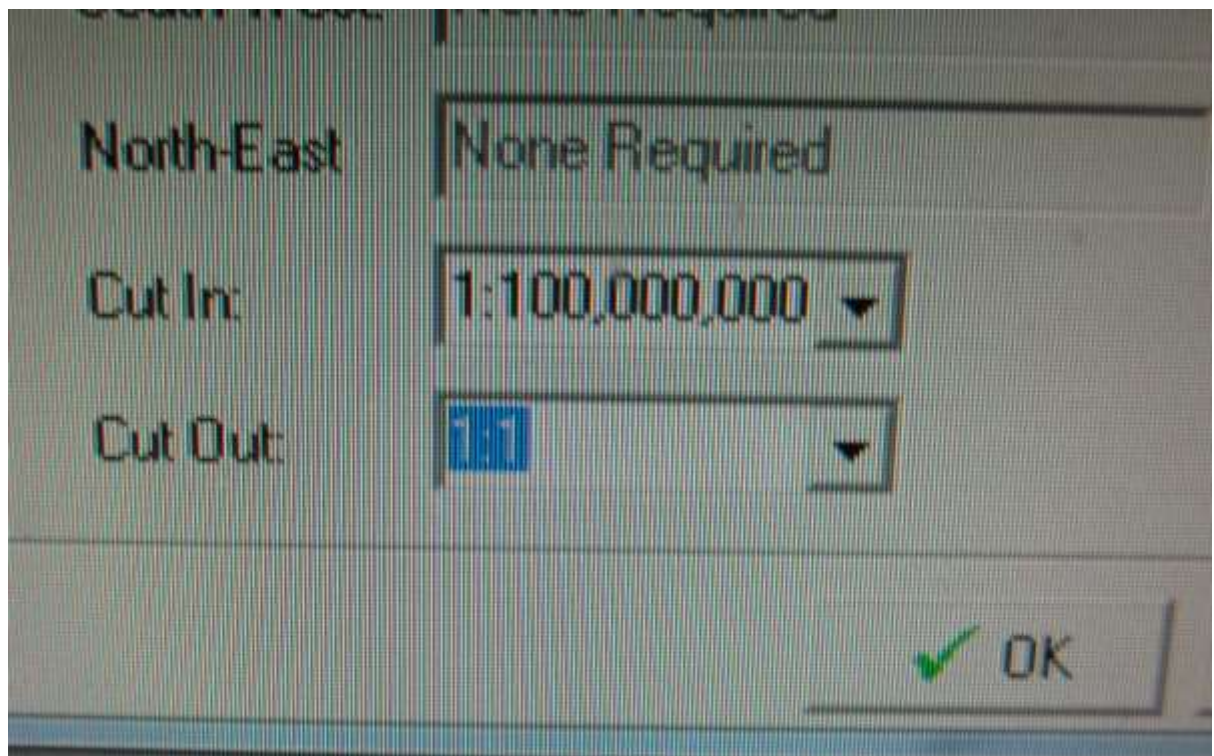


5. File Details Are Entered Here

Select the file first by browsing to the DVD (using ... button). Find the gsf file. Then enter the name for the map in the name box (eg SW44). South-West and North East details are not required.



6. Cut In and Cut Out – select these as follows. Click Ok



7. You will need to complete steps 4 to 6 for each map.